



— — — *ENGINEERING*
CONSTRUCTION —



— — — **CAPABILITY**
STATEMENT —

COMPANY INFORMATION

COMPANY NAME

YAT Capital Group Pty Ltd

TRADING NAME

YAT Engineering and Construction

ENTITY STATUS

Company

ABN

71 167 357 057

DATE OF REGISTRATION

23/12/2013

INSURANCES

Public Liability Insurance

Professional Indemnity Insurance

Workers Compensation Insurance

Contractors Plant and Machinery Insurance

Industrial Disease Insurance

MEMBERSHIPS

MIEAust – Member of the Institution of Engineers Australia

CCIWA – Chamber of Commerce and Industry WA

AN ISO CERTIFIED COMPANY



Quality

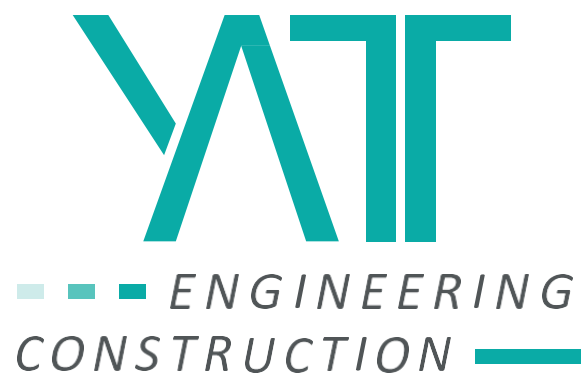


Safety



Environment





INTRODUCTION & COMPANY OVERVIEW

YAT Engineering and Construction (YAT) is an industrial engineering design and construction company located in Western Australia. YAT Engineering and Construction was formed in 2013 in Perth, Western Australia and has now expanded into the North West region of Western Australia.

In 2013, YAT established an engineering design and drafting service division focussed on servicing clients in the residential, commercial and mining sectors. Drawing from existing capabilities and previous experience a construction division was created in 2015. The engineering and construction divisions work together to specialise in structural and civil design and construction projects. A maintenance division also operates alongside the construction component of the company expertly delivering maintenance solutions to operational mine sites.

MISSION STATEMENT

To deliver exceptional design, construction and maintenance outcomes for our clients through highly effective teamwork, communication and attention to detail. To exceed our clients expectations.

To Design, Create, and Surpass.

VISION STATEMENT

At the heart of YAT Engineering and Construction is our vision:

To lead the way in commercial and industrial construction and maintenance. We deliver a partnership with our clients that builds trust and confidence through expert support and guidance. We are proud to deliver our service without compromising our relationships. We want to be the preferred choice.

OUR VALUES



TEAMWORK

- We work together towards our common goals
- We take responsibility and are accountable to our own roles
- We communicate with respect and honesty



COMMITMENT

- We are committed to our people
- We are committed to continuous improvement



FLEXIBILITY

- We are able to accept and manage change
- We are highly adaptable, no job is too big or too small

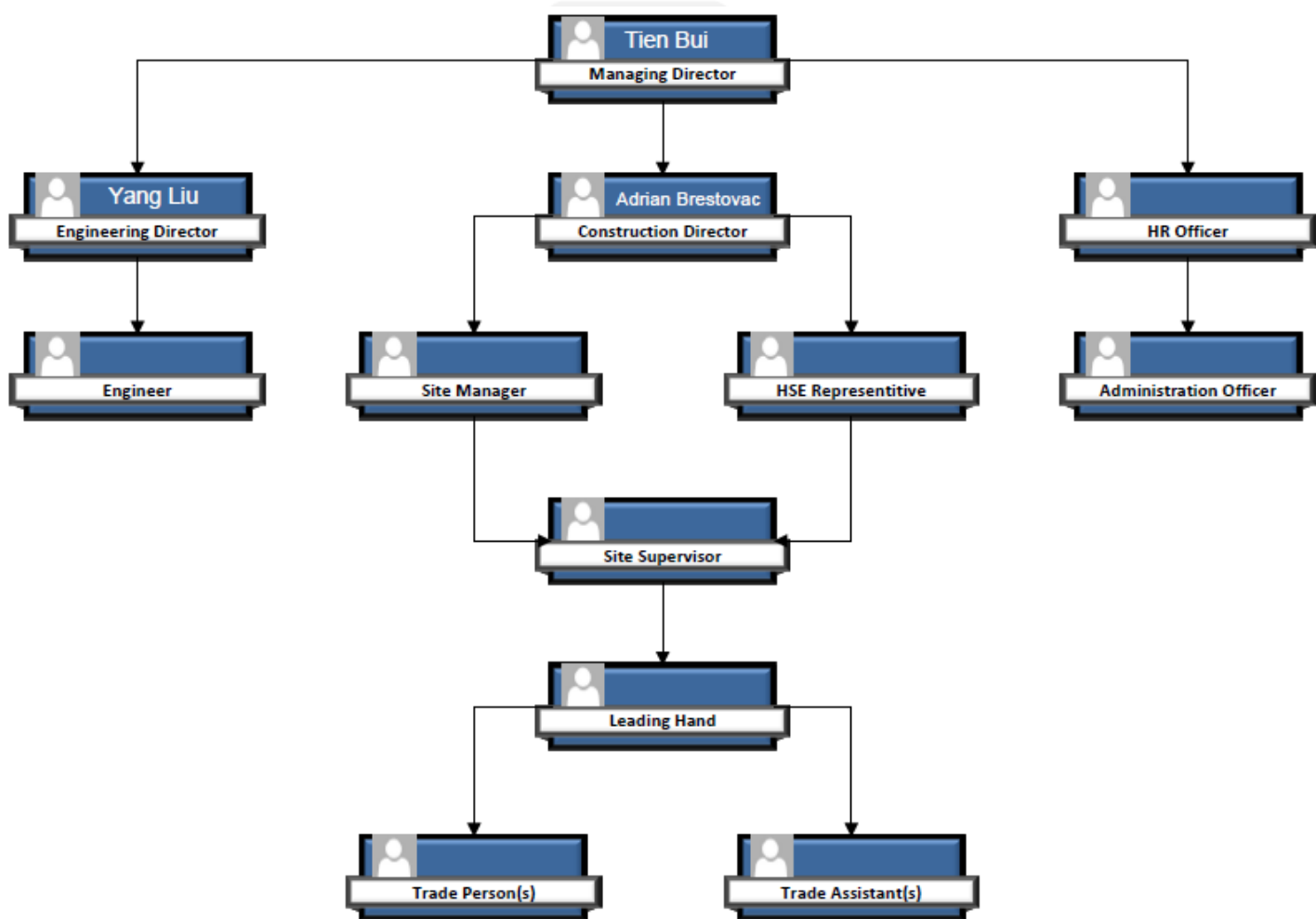


SAFETY

- YAT Engineering and Construction staff take care of each other ensuring safe practices
- We want our contractors and clients to feel safe when working with YAT



ORGANISATION CHART



YAT CONSTRUCTION EMPLOYS A NUMBER OF SKILLED PEOPLE INCLUDING

- Boilermaker/Certified welders
- Crane operators
- Concreters/Form workers
- Trades assistants
- Advanced riggers
- Painter/Blasters
- Steel fixers
- Civil construction operators

CORE COMPETENCIES

STRUCTURAL CONCRETE DESIGN & CONSTRUCTION

YAT CONSTRUCTION REINFORCED CONCRETE CAPABILITIES INCLUDE

- Insitu formwork and precast formwork
- Complex steel fixing
- Concrete pouring and finishing
- Completing concrete pours under harsh conditions
- Project Engineer on staff to tackle any immediate under construction complications



Complete Design and construction of a slurry drainage slab and sump.



Complex reinforcement with precise drainage falls to concrete.



Insitu slab for crane jib incorporated into an existing structure.



CIVIL AND STRUCTURAL MAINTENANCE

YAT CONSTRUCTION MAINTENANCE CAPABILITIES INCLUDE

- Culvert, V Drain and Earth Drainage repairs
- Concrete demolition/cutting and removal
- Concrete crack repair and concrete grout injection repairs
- Concrete additions/extensions to existing structures
- Experience in carrying out maintenance tasks within operational areas with little or no downtime to Client productions while maintaining high safety standards
- Project Engineer on staff to tackle any immediate under construction complications



Column extensions required to lift an existing structure. Extensions designed and fabricated on site.

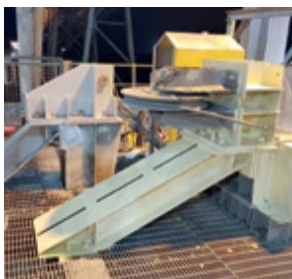
Note: Photo taken prior to painting due to inspection.



Design and site fabrication of permanent platform to replace scaffolding.



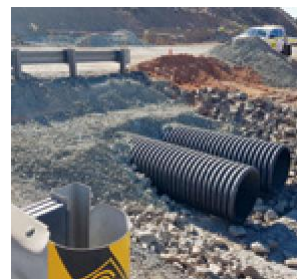
Four Pebble chutes fabricated in our workshop and installed on site.



Design and fabrication to Strengthen existing concrete cable winch plinths with structural steel.



Design, Fabrication and installation of walkways over conveyors.



Culvert extension to suit road widening.



Removal of existing concrete and installation of concrete plinths.



Completed concrete plinths.



Repair of collapsed culvert section.



STRUCTURAL STEEL FABRICATION, & INSTALLATION

YAT CONSTRUCTION STEEL CAPABILITIES INCLUDE

- Fabrication and lifting of new steel components
- Installation of new steel components into operational areas
- Modification of existing steel components in operation areas
- Project engineer on staff to tackle any immediate under construction complications



A category 5 steel structure and wash down platform was required to protect the existing plant from the conveyors above.



Scaffolding removed and steel structure and platform in place.

Project requirement was for minimal exposure of plant to conveyor debris.

Preassembly and a dual crane lift were used to minimise exposure and meet the client's requirements



Category 5 steel structure designed and fabricated in our workshop and installed on site.

Design incorporated the continued use of the existing building during construction.



Completed structure.

All design, earthworks, fabrication and installation of all components completed.



Design and fabrication of access bridge over mill.



Access bridge in place over mill.



PAINING AND BLASTING

YAT CONSTRUCTION BLASTING AND PAINTING CAPABILITIES INCLUDE

- Blasting and painting of insitu fixed plant, equipment and structures.
- Blasting and painting of new fabricated items
- Low dust blasting utilizing blast and vac recovery system



Blasting and painting of existing fuel farm tanks.



Removal of equipment, blasted and painted in workshop ready for reinstall.



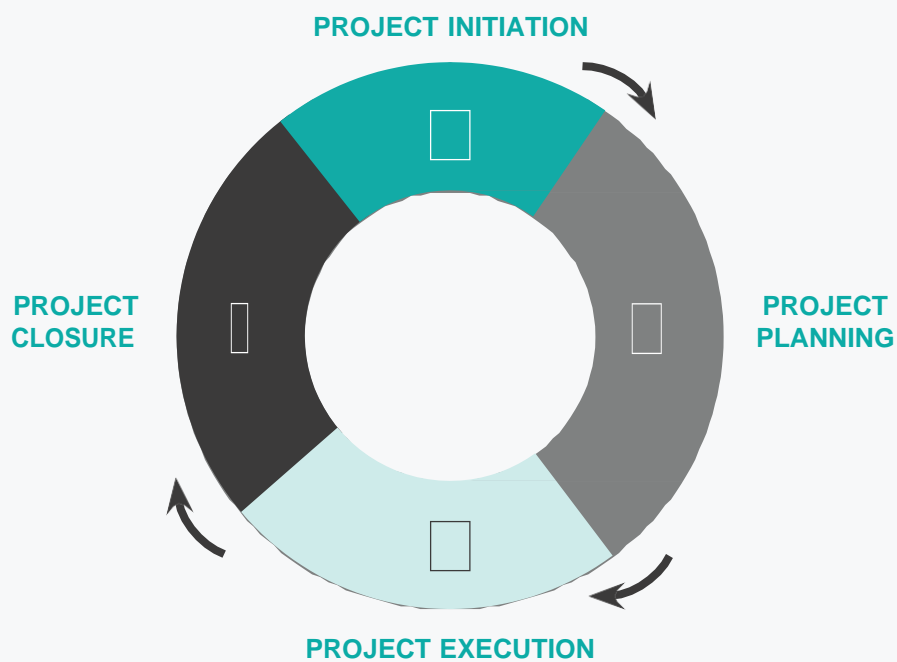
Blasting of existing steel structures in brownfields environments



Painting of existing steel structures in brownfields environments

PROJECT MANAGEMENT, ENGINEERING DESIGN & DRAFTING

The integrity of our company and the projects we undertake is underpinned by some of the best and well recognised Australian companies within the construction industry. Our partners provide the best materials and service, giving our clients peace of mind and satisfaction that they have made the right choice!



With several in house Structural Engineers and Project Managers with a broad range of construction design and Project Management experience, we can offer a tailored solution to your project.

YAT Engineering design capabilities include:

- Reinforced Concrete - Insitu and Precast Concrete structure design.
- Structural Steel - Steel frame, Platforms, Walkways, Bridges, Conveyor Chutes, Crane and Truss design.
- Civil Work - Drainage, Road and Earthwork.
- Pipe Design.

OHS, ENVIRONMENT & QUALITY

OBLIGATIONS

YAT Engineering and Construction recognises its moral and legal responsibility to provide a safe and healthy work environment for employees, contractors, clients and visitors. This commitment extends to ensuring that YAT operations do not place the local community at risk of injury, illness or property damage. YAT consider safety to be more than a compliance issue, it's about developing a culture of safety.

OBJECTIVES

YAT Engineering and Construction will:

- Provide safe plant and systems of work.
- Provide written procedures and instructions to ensure safe systems of work.
- Ensure compliance with legislative requirements and current industry standards
- Provide information, instruction, training and supervision to employees, contractors and customers to ensure their safety.
- Provide support and assistance to employees.

YAT plans and monitors its operations to ensure that all goods and services provided will, as a minimum, conform to client requirements.

YAT back this assurance with the implementation of appropriate quality management systems which include the necessary inspections and tests and documentation that will provide evidence of compliance.

The company's quality system is based largely on pre-commencement planning and preparation and, when required, the preparation of a project quality plan.

The management of YAT is committed to the company goal of client satisfaction on each and every project it undertakes.



YAT

— — — ENGINEERING
CONSTRUCTION —

TRUSTED PARTNERS

The integrity of our company and the projects we undertake is underpinned by some of the best and well recognised Australian companies within the construction industry. Our partners provide the best materials and service, giving our clients peace of mind and satisfaction that they have made the right choice!





— — — *ENGINEERING*
CONSTRUCTION —

CONTACT US

AUSTRALIA

Head Office, Western Australia

Suite 8, 250 Beaufort Street
Perth WA6000

Phone: 61+ (08) 6166 9148

Email: admin@yatconstruction.com.au

www.yatconstruction.com.au

